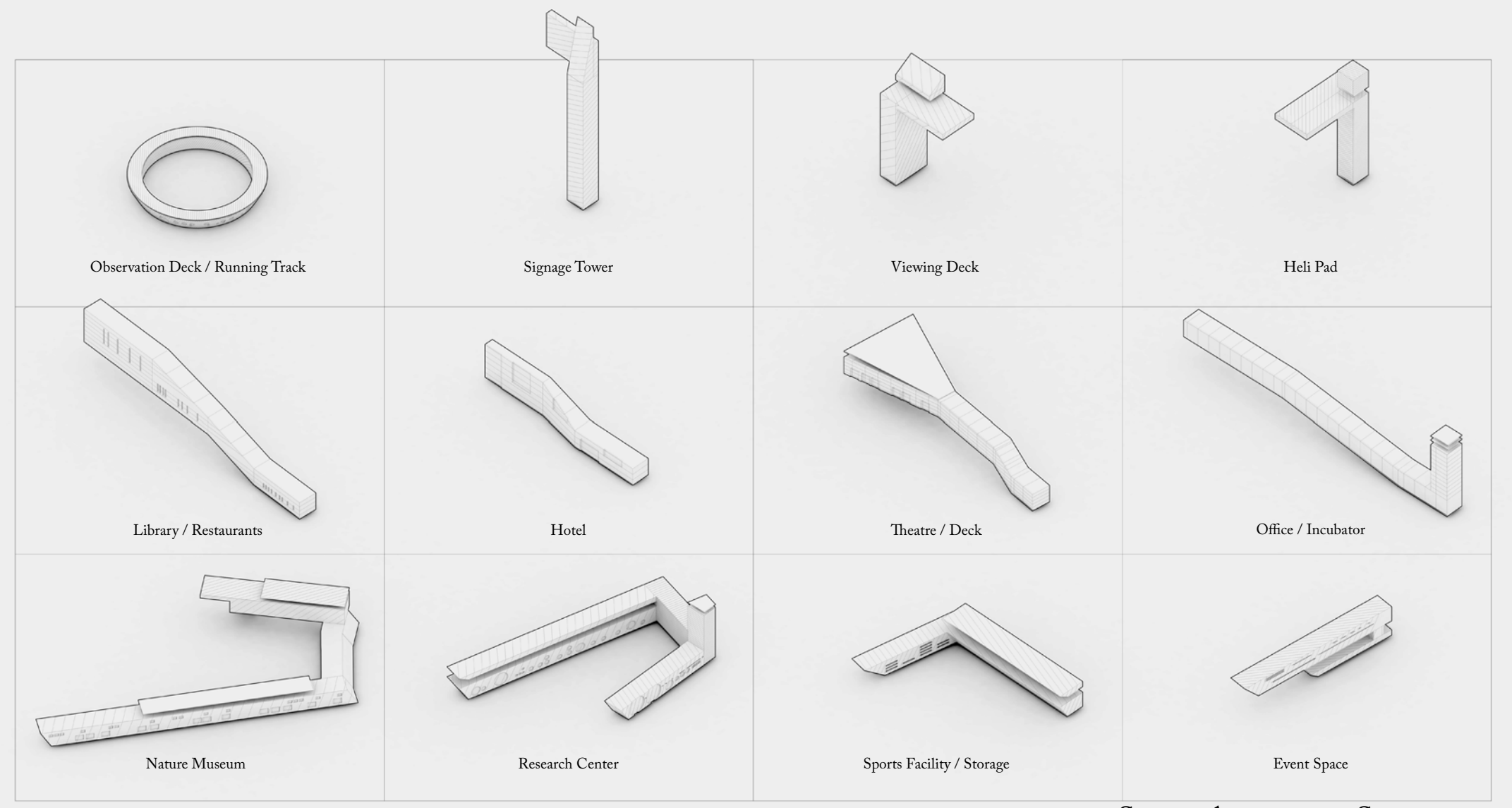


Underutilized Existing Space

Proposed New Green Space



Space Activating Structures



New Structures in Context

01. Re-purposing of Surface Parking into Forest

02. Circular Activity Ring and Forest Connector

03. South Downtown Linear Parks and Structures



04. Educational and Sport Facilities Over Trinity River

05. North Downtown and Extending Fields

06. Surface Parking Converted to Connection to Tunnels

